



Lower Thames Crossing 2.15 Tunnel Limits of Deviation Plans (Tracked changes version)

APFP Regulation 5(2)(o) & 6(2)

Infrastructure Planning (Applications:
Prescribed Forms and Procedure)
Regulations 2009

Volume 2

DATE: November 2023

DEADLINE: 7

Deleted: September

Deleted: 4

Planning Inspectorate Scheme Ref: TR010032
Application Document Ref: TR010032/APP/2.15

VERSION: 3.0

Deleted: 2

Revision history

Version	Date	Submitted at
1.0	31 October 2022	DCO Application
2.0	19 September 2023	Deadline 4
3.0	17 November 2023	Deadline 7

Lower Thames Crossing

2.15 Tunnel Limits of Deviation Plans (Tracked changes version)

List of contents

	Page number
1 Introduction	1
2 Schedule of plans included in this application document.....	3

1 Introduction

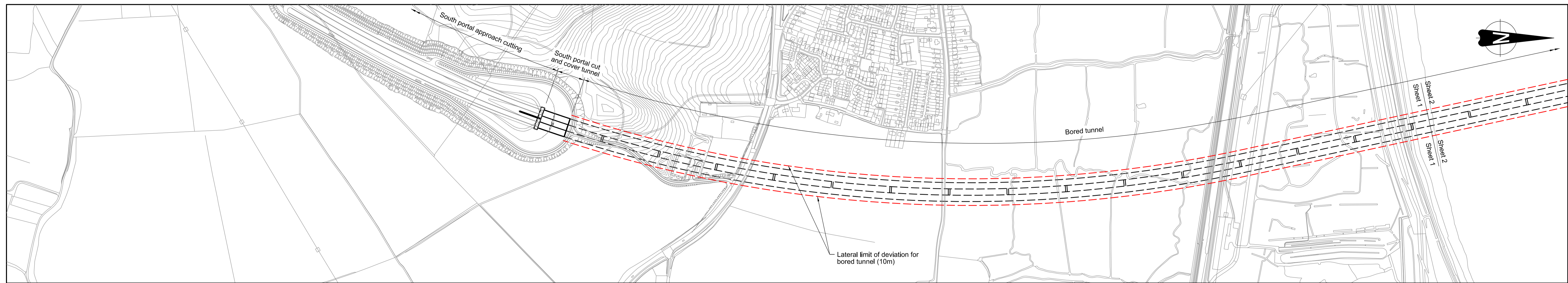
- 1.1.1 This document is submitted to the Planning Inspectorate on behalf of the Secretary of State in relation to an application made by National Highways (the Applicant) under section 37 of the Planning Act 2008.
- 1.1.2 The application is for the grant of development consent for the A122 Lower Thames Crossing. Should development consent be granted, the draft A122 (Lower Thames Crossing) Development Consent Order (Application Document 3.1) (the draft Order) will be made by the Secretary of State (subject to any modifications considered appropriate).
- 1.1.3 This document comprises part of the suite of application documentation and is included in the application in compliance with Regulations 5(2)(o) and 6(2) of the Infrastructure Planning (Applications: Prescribed Forms and Procedure) Regulations 2009, which require:
- 5(2)(o) 'any other plans, drawings and sections necessary to describe the proposals for which development consent is sought, showing details of design, external appearance, and the preferred layout of buildings or structures, drainage, surface water management, means of vehicular and pedestrian access, any car parking to be provided, and means of landscaping.*
- 6(2) If the application is for highway related development or for the construction or alteration of a railway, it must be accompanied by section drawings to suitable horizontal and vertical scales, which show, by reference to Ordnance Survey or Chart datum... (b) a cross section of every intended tunnel and any altered gradient of a carriageway or a way forming part of a guided transport system on either side of every level crossing, bridge, tunnel or underpass which would carry the carriageway or way or through which it would pass.'*
- 1.1.4 The purpose of the Tunnel Limits of Deviation is to illustrate the vertical and lateral limits of deviation applicable to the tunnel portal structures, tunnels and tunnel service building (Works Nos. 3A, 3C, 4A, 4B and 5A).
- 1.1.5 The lateral limits of deviation for the remaining works are shown in the Works Plans (Application Document 2.6); article 6 of the draft Order establishes the vertical limits of deviation. Further information about the limits of deviation is provided in the Introduction to the Application (Application Document 1.3).
- 1.1.6 To ensure sufficient detail and clarity of information, the Tunnel Limits of Deviation have been prepared with a horizontal scale of 1:5000 and a vertical scale of 1:500. The horizontal scale is smaller than that prescribed in Regulation 5(3) of the 2009 Regulations so that it allows the whole extent of the tunnel alignment to be shown in plan view over two sheets and corresponds to the horizontal scale of the longitudinal profile. The difference between the horizontal and the vertical scales means that the structures shown in the longitudinal profile are exaggerated in their vertical representation.
- 1.1.7 Numbered works shown in the Tunnel Limits of Deviation are consistent with the information presented in the Works Plans (Application Document 2.6) and defined in Schedule 1 of the draft Order (Application Document 3.1).

- 1.1.8 As this document has been informed by and is part of the application documentation it should be read alongside the other application documents. In particular, the plans should be read alongside Schedule 1 of the draft Order (Application Document 3.1).
- 1.1.9 These plans have been updated for Deadline 4 to include the proposed changes MRC01, MRC02 and MRC03 following the procedural decision made by the Examining Authority **[PD-031]**.
- 1.1.10 [These plans have been updated for Deadline 7 to include the proposed amendment EA09, as detailed in the Applicant's Amendment Letter \(document number TR010032/EXAM/10.46\).](#)

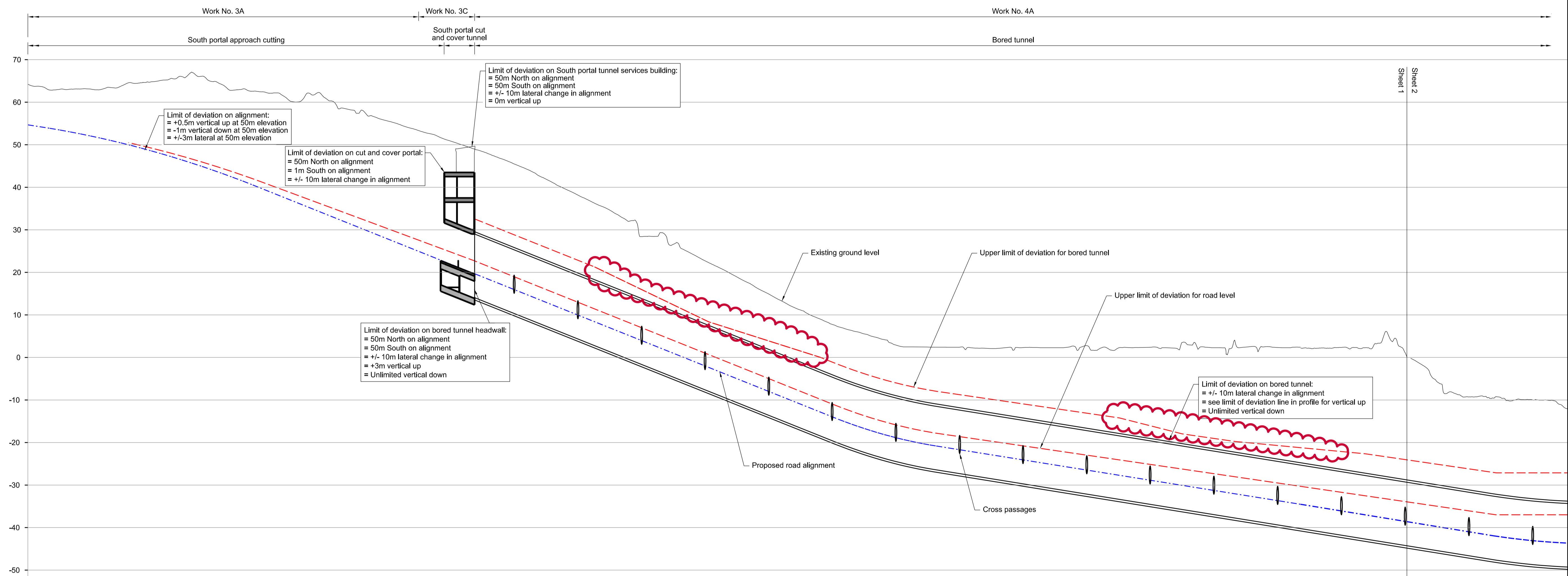
2 Schedule of plans included in this application document

Document Title	Document Number	Revision
TUNNEL LIMITS OF DEVIATION REGULATION 5(2)(o) & 6(2) BORED TUNNEL SHEET 1 OF 2	TR010032/APP/2.15	P02
TUNNEL LIMITS OF DEVIATION REGULATION 5(2)(o) & 6(2) BORED TUNNEL SHEET 2 OF 2	TR010032/APP/2.15	P02
TUNNEL LIMITS OF DEVIATION REGULATION 5(2)(o) & 6(2) GROUND PROTECTION TUNNEL	TR010032/APP/2.15	P01

Deleted: P01



PLAN



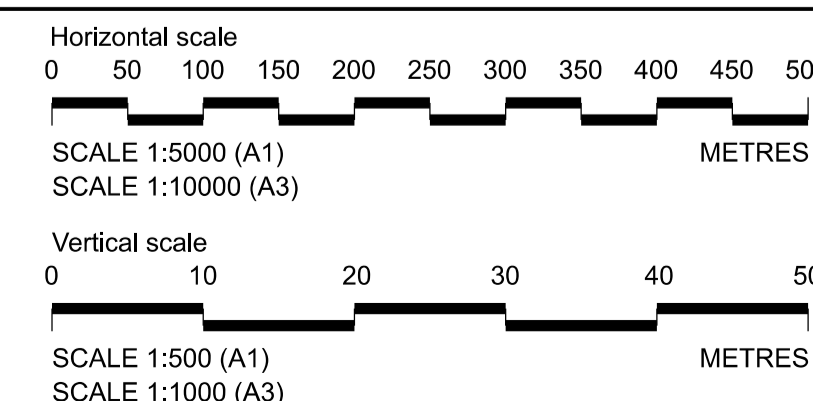
	1+256	1+500	1+750	2+000	2+250	2+500	2+750	3+000	3+250	3+500	3+750	4+000	4+250	4+500	4+750
DATUM= -60															
GROUND LEVELS	64.2	64.6	62.9	58.6	50.9	40.6	29.3	14.9	4.8	2.2	2.7	3.5	2.2	0.4	-10.1
UPPER LIMIT OF DEVIATION FOR ROAD LEVEL		50.3	43.2	34.1	24.8	15.0	5.0	-5.0	-14.5	-19.4	-23.0	-26.7	-30.3	-33.9	-37.0
PROPOSED ROAD LEVELS	54.7	49.8	41.9	32.0	22.0	12.0	2.0	-8.0	-17.5	-22.5	-26.5	-30.5	-34.5	-38.6	-42.6
CHAINAGE	1+256	1+500	1+750	2+000	2+250	2+500	2+750	3+000	3+250	3+500	3+750	4+000	4+250	4+500	4+750

LONGITUDINAL SECTION

Contains Ordnance Survey data. © Crown copyright and database rights 2020. Ordnance Survey 100030649						
P01	S8	19/10/2022	DCO Application	RT	RO	ASB
P02	S8	13/11/2023	Deadline 7	RT	RO	ASB
Rev	Status	Rev. Date	Purpose of revision	Drawn	Chck'd	Apprv'd

- NOTES:
- The design and location of the structure is shown here for illustrative purposes only and will be subject to detailed design development in accordance with the provisions of the Development Consent Order (TR010032/APP/3.1).
 - Drawings show engineering earthworks only. Landscaping earthworks are not shown.
 - All dimensions in millimetres unless noted otherwise.
 - All levels relate to Ordnance datum unless stated otherwise.
 - Do not scale from this drawing. Do not take digital dimensions off this drawing. Work to figured dimensions only.
 - Chainages and levels shown on the longitudinal section are for the Northbound alignment only. Chainages for the Southbound alignment are similar.

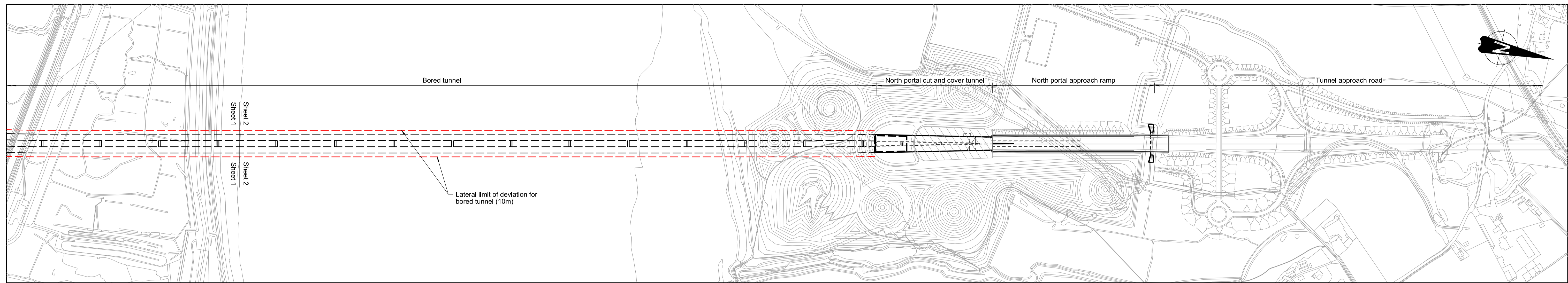
- LIMIT OF DEVIATION
- PROPOSED ROAD ALIGNMENT



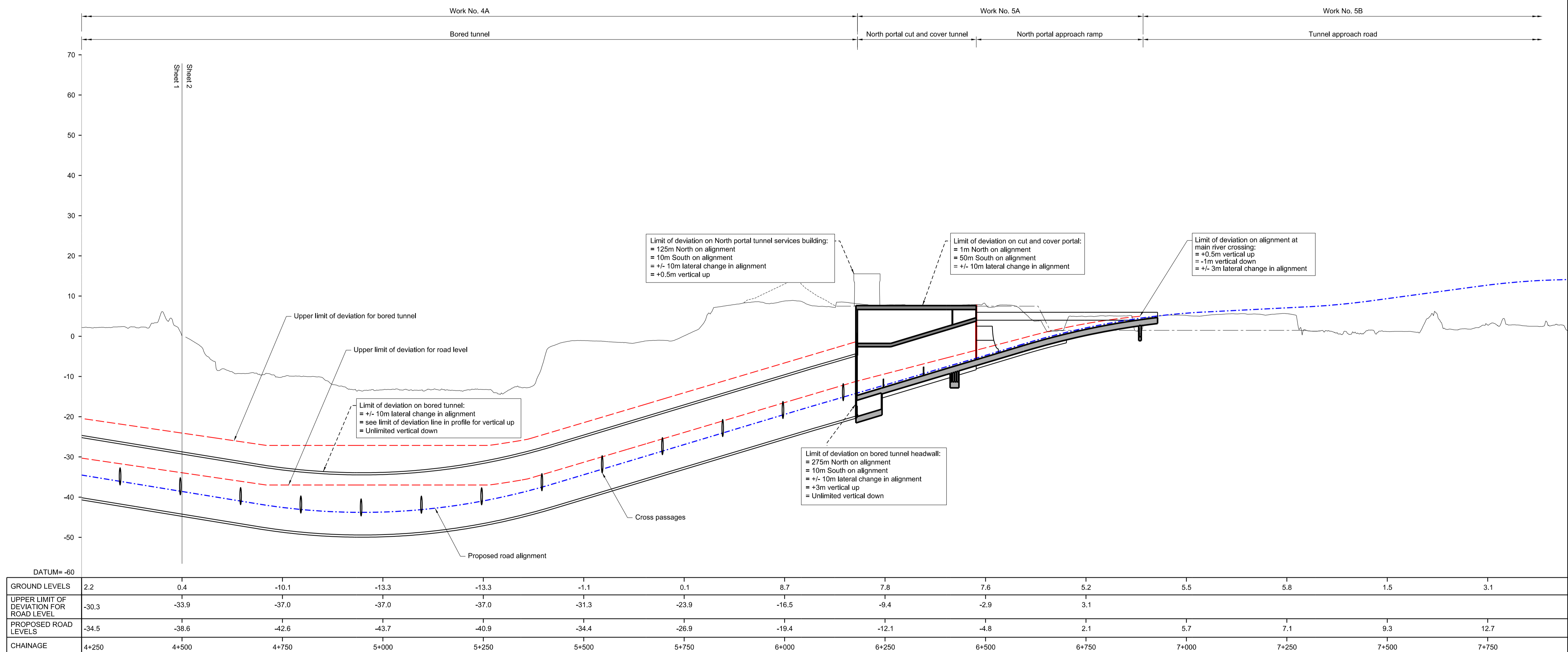
Client: national highways

Project: LOWER THAMES CROSSING

Status	DCO Application	Original Size	A1	Revision	P02
Application Document Number	TR010032/APP/2.15	Scale	AS SHOWN		
Drawing title	TUNNEL LIMITS OF DEVIATION REGULATION 5(2)(o) & 6(2) BORED TUNNEL SHEET 1 OF 2				
Drawing Number	HE540039-CJV-BOP-SZZ_TN000000_-DR-CT-20001				



PLAN



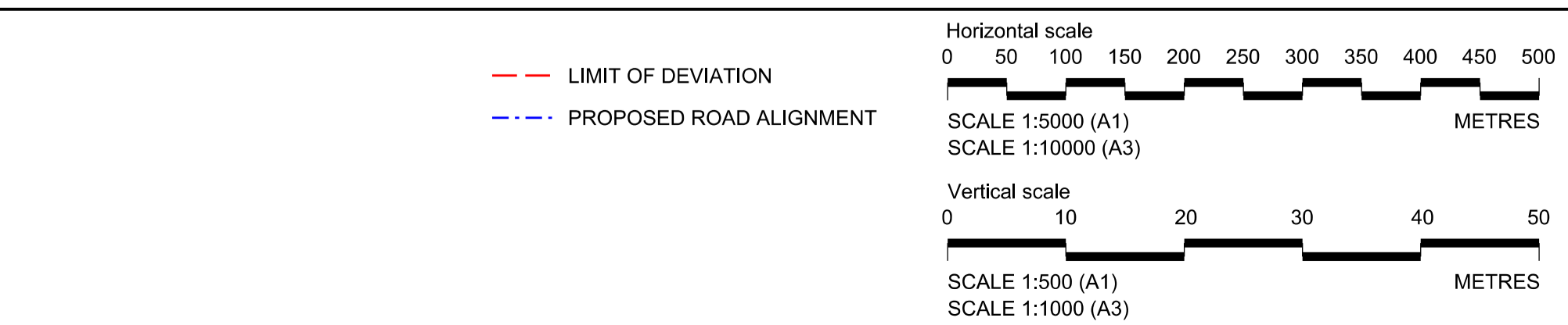
LONGITUDINAL SECTION

Contains Ordnance Survey data. © Crown copyright and database rights 2020. Ordnance Survey 100030649

Rev	Status	Rev. Date	Purpose of revision	Drawn	Chck'd	Appr'd
P01	S8	19/10/2022	DCO Application	RT	RO	ASB
P02	S8	19/09/2023	Deadline 4	RT	RO	ASB

NOTES:

- The design and location of the structure is shown here for illustrative purposes only and will be subject to detailed design development in accordance with the provisions of the Development Consent Order (TR010032/APP/3.1).
- Drawings show engineering earthworks only. Landscaping earthworks are not shown.
- All dimensions in millimetres unless noted otherwise.
- All levels relate to Ordnance datum unless stated otherwise.
- Do not scale from this drawing. Do not take digital dimensions off this drawing. Work to figured dimensions only.
- Chainages and levels shown on the longitudinal section are for the Northbound alignment only. Chainages for the Southbound alignment are similar.

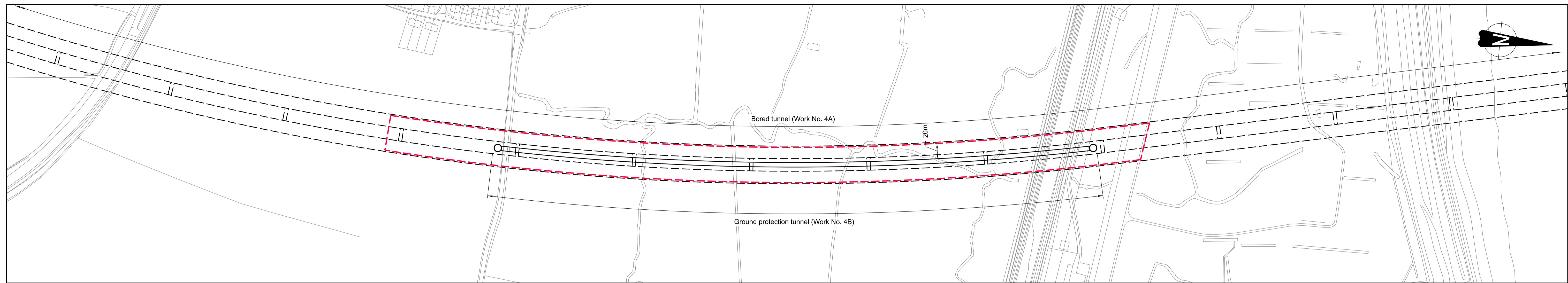


Client: national highways

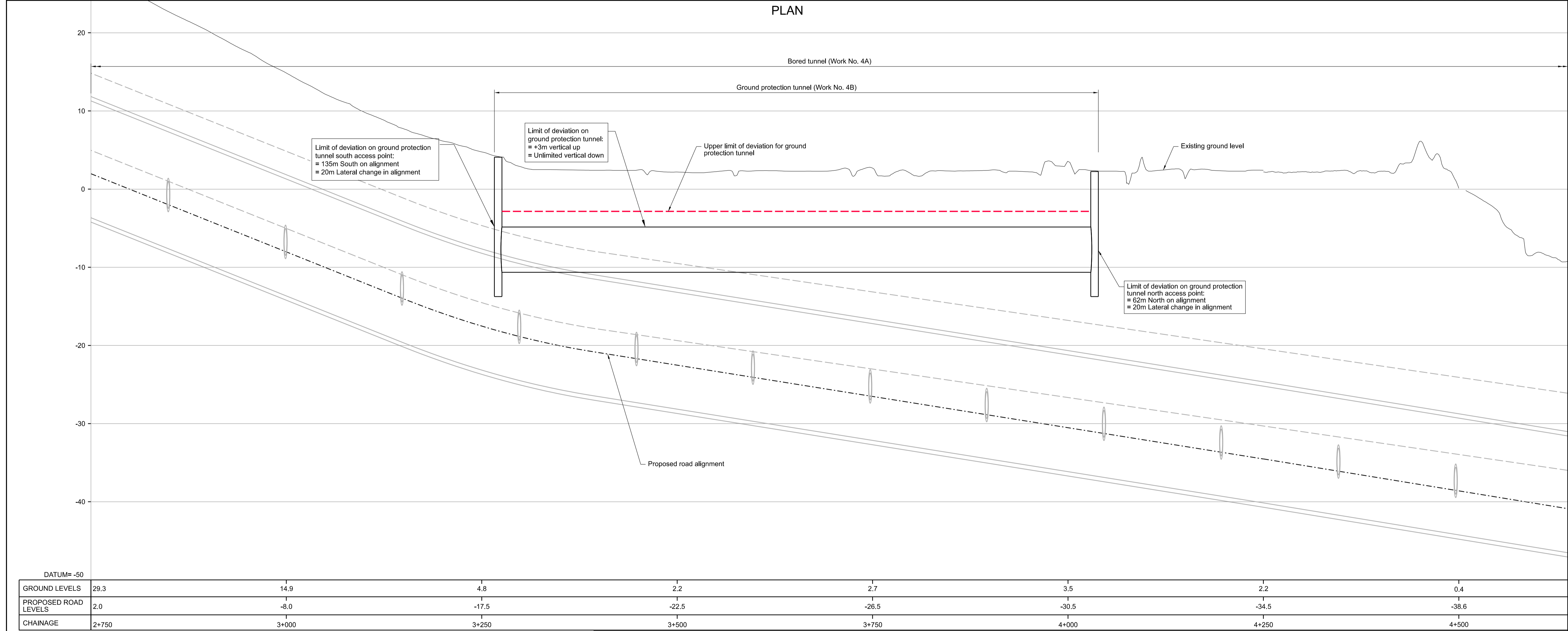
Project: LOWER THAMES CROSSING

Status	DCO Application	Original Size	Revision
Application Document Number	TR010032/APP/2.15	A1	P02
Drawing title	TUNNEL LIMITS OF DEVIATION REGULATION 5(2)(o) & 6(2) BORED TUNNEL SHEET 2 OF 2		
Drawing Number	HE540039-CJV-BOP-SZZ_TN000000_-DR-CT-20002		

Scale: AS SHOWN



PLAN



LONGITUDINAL SECTION

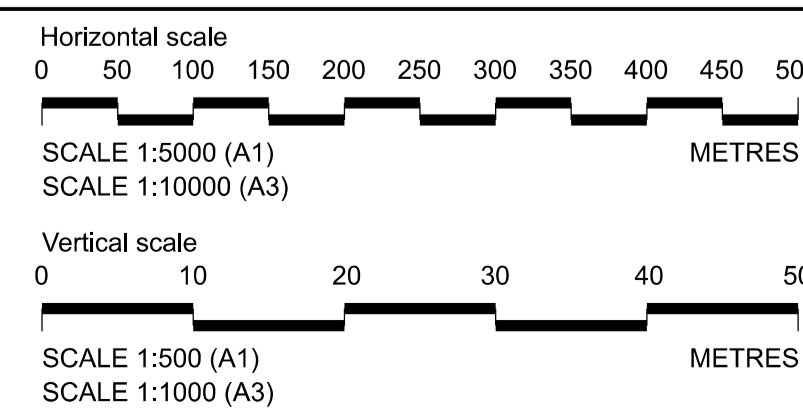
Contains Ordnance Survey data. © Crown copyright and database rights 2020. Ordnance Survey 100030649

P01	SB	19/10/2022	DCO Application	RT	RO	ASB
Rev	Status	Rev. Date	Purpose of revision	Drawn	Chck'd	Apprv'd

NOTES:

- The design and location of the structure is shown here for illustrative purposes only and will be subject to detailed design development in accordance with the provisions of the Development Consent Order (TR010032/APP/3.1).
- Drawings show engineering earthworks only. Landscaping earthworks are not shown.
- All dimensions in millimetres unless noted otherwise.
- All levels relate to Ordnance datum unless stated otherwise.
- Do not scale from this drawing. Do not take digital dimensions off this drawing. Work to figured dimensions only.
- Chainages and levels shown on the longitudinal section are for the Northbound alignment only. Chainages for the Southbound alignment are similar.

- LIMIT OF DEVIATION (GROUND PROTECTION TUNNEL)
- LIMIT OF DEVIATION (BORED TUNNEL)
- PROPOSED ROAD ALIGNMENT



Client

Project
LOWER THAMES CROSSING

Status	DCO Application	Original Size	Revision
Application Document Number	TR010032/APP/2.15	A1	P01
Scale	AS SHOWN		
Drawing title	TUNNEL LIMITS OF DEVIATION REGULATION 5(2)(o) & 6(2) GROUND PROTECTION TUNNEL		
Drawing Number	HE540039-CJV-BOP-SZZ_TN000000_-DR-CT-20003		

If you need help accessing this or any other National Highways information, please call **0300 123 5000** and we will help you.

© Crown copyright 2023.

You may re-use this information (not including logos) free of charge in any format or medium, under the terms of the Open Government Licence. To view this licence:

visit www.nationalarchives.gov.uk/doc/open-government-licence/

write to the **Information Policy Team, The National Archives, Kew, London TW9 4DU**, or email psi@nationalarchives.gsi.gov.uk.

Mapping (where present): © Crown copyright and database rights 2023 OS 100030649. You are permitted to use this data solely to enable you to respond to, or interact with, the organisation that provided you with the data. You are not permitted to copy, sub-licence, distribute or sell any of this data to third parties in any form.

If you have any enquiries about this publication email info@nationalhighways.co.uk or call **0300 123 5000**.*

*Calls to 03 numbers cost no more than a national rate call to an 01 or 02 number and must count towards any inclusive minutes in the same way as 01 and 02 calls.

These rules apply to calls from any type of line including mobile, BT, other fixed line or payphone. Calls may be recorded or monitored.

Printed on paper from well-managed forests and other controlled sources when issued directly by National Highways.

Registered office Bridge House, 1 Walnut Tree Close, Guildford GU1 4LZ

National Highways Limited registered in England and Wales number 09346363